



# THE RUMA

HOTEL AND RESIDENCES



# THE RUMA HOTEL AND RESIDENCES

7 Jalan Kia Peng, 50450 Kuala Lumpur, Malaysia

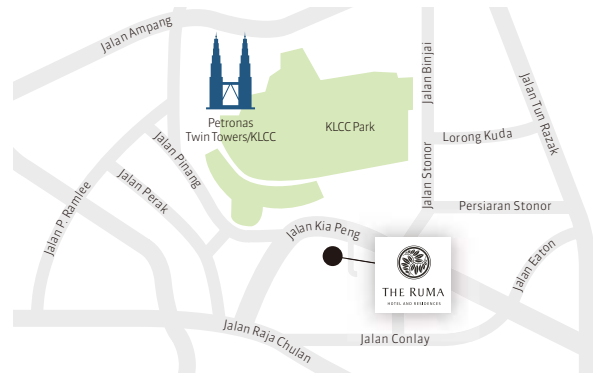
T +60 3 2778 0888

F +60 3 2778 0999

information@theruma.com

www.theruma.com

www.urbanresortconcepts.com



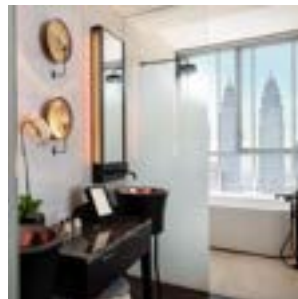
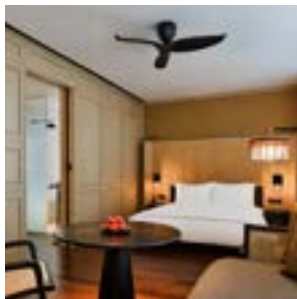
A LUXURY HOTEL  
Managed by  
URBAN RESORT CONCEPTS

A MEMBER OF  
THE LEADING HOTELS  
OF THE WORLD

VIRTUOSO.  
POWERED

The RuMa means home in its most literal sense. It is a hotel that captures all the intimacy of a home, run by an accomplished host. A stay will inspire you to uncover the city's origins and colonial heritage in a contemporary and luxurious setting that exudes the soothing qualities of a true Urban Resort. You'll be charmed by a host and a guest experience unlike any in the region today. Once you arrive at The RuMa Hotel and Residences you enter a world that revolves around you.

- 253 luxuriously appointed guest rooms and suites
- "ATAS"
- "SEVEN" – Lobby Bar
- "The LIBRARI"
- "UR SPA" – Modern Science. Ancient Healing.
- "SANTAI" – Pool Bar and Lounge
- Meeting Space for up to 180 guests



## Location

### Directions

- Located on Jalan Kia Peng in the "Golden Triangle", Kuala Lumpur's commercial, shopping and entertainment hub
- 60-minute car ride from Kuala Lumpur International Airport (KLIA) and KLIA2
- 20-minute car ride from Kuala Lumpur Sentral Station

### Places of Interest

- Petronas Twin Towers (1 km)
- Dewan Filharmonik Petronas (1 km)
- Suria KLCC Shopping Mall (1 km)
- Kuala Lumpur Convention Centre (500 m)
- KLCC Park (500 m)
- Aquaria KLCC (500 m)
- Karyaneka Malaysian Craft (1 km)
- Pavilion Kuala Lumpur & Bukit Bintang Shopping District (1.2 km)
- Kuala Lumpur Tower (2.5 km)
- KL Forest Eco Park (2.7 km)
- Central Market & Chinatown (4 km)
- Royal Museum (5 km)
- Merdeka Square (5.5 km)
- National Mosque of Malaysia (6.7 km)
- Tunku Abdul Rahman Putra Memorial (6.7 km)
- Perdana Botanical Gardens (7 km)
- National Museum (7 km)
- KL Bird Park (8.4 km)
- Batu Caves (15 km)

## Accommodation

### Room Category

- Deluxe Room (43 m<sup>2</sup>)
- Grand Room (45 m<sup>2</sup>)
- Corner Studio – City View (45m<sup>2</sup>)
- Corner Studio – Twin Tower View (45m<sup>2</sup>)
- Grand Studio (48 m<sup>2</sup>)
- 2 Bedroom Family Studio (90 m<sup>2</sup>)
- Deluxe Suite (60 m<sup>2</sup>)
- Grand Suite (88 m<sup>2</sup>)
- 2 Bedroom Deluxe Suite (110 m<sup>2</sup>)
- RuMa Suite (111 m<sup>2</sup>)
- 2 Bedroom RuMa Suite (172 m<sup>2</sup>)

### Room Amenities and Benefits

- Bedroom and bathroom separable by a floor-to-ceiling screen
- Designated lounge, work and dining area
- Complimentary stocked minibar with daily replenishment
- High-definition television with screen mirroring capability
- Twin vanity basins
- Oval soaking bathtub with separate rainforest shower
- Automated blackout roller blind
- Nespresso coffee machine
- Traditional tea set
- Personal safe
- King and Twin bedding
- Sumptuous 330-thread count Egyptian cotton bed linen
- Complimentary best in class Wi-Fi
- Complimentary breakfast
- Complimentary local telephone calls
- Welcome drink of choice

## Dining

- ATAS
- SEVEN Lobby Bar
- SANTAI Pool Bar and Lounge
- The LIBRARI
- VERANDAH al fresco dining
- In-room dining

## Facilities

- Infinity pool
- Outdoor sun deck
- 24-hour state-of-the-art gym
- UR SPA
- Barber at The RuMa by Truefitt & Hill



## THE LIBRARI



## SEVEN LOBBY BAR



## ATAS

### The LIBRARI

The LIBRARI is a sensorial space where guests can voyage through time by discovering artefacts and flea market antiques from the Kuala Lumpur of yesteryear alongside vintage magazines and intriguing books on culture, design and architecture, while savouring afternoon tea, snacks, desserts and cakes.

Open daily from 10:00 – 00:00

### SEVEN Lobby Bar

Nestled discreetly into the daylight-filled conservatory that extends from the hotel's lobby, SEVEN Lobby Bar offers an array of delectable drinks, refreshments and light meals to indulge, converse or exchange.

Open daily from 10:00 – 00:00

### ATAS

Located on the mezzanine floor, ATAS celebrates unique Asian and European flavours in a contemporary fashion. Embodying the soul of de-formalised dining, the open kitchen is surrounded by the common dining room, the VERANDAH al fresco dining area and one private dining room.

Breakfast Daily 06:30 – 10:30

Lunch Tuesday – Sunday 12:00 – 14:30, closed on Mondays

Dinner Tuesday – Sunday 18:00 – 22:00, closed on Mondays



## SANTAI Pool Bar and Lounge

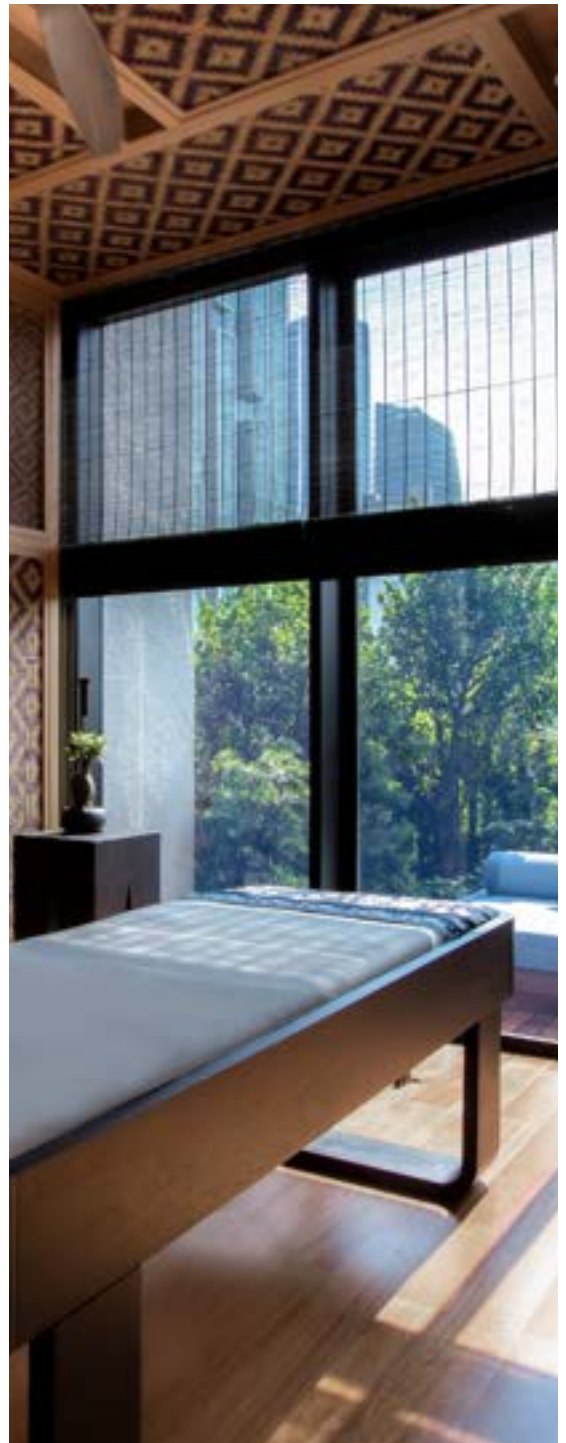
Opening up to the Kuala Lumpur skyline from the 6th floor, SANTAI Pool Bar and Lounge is a laid-back alcove where the black- and gold-graded infinity pool cantilevers over the building's edge to offer dreamscape views from above. Guests can take a leisurely dip before unwinding on the sun-soaked chaise lounges and sofa beds that dot the pool deck, while a terrace meeting room is available for discussions of a more relaxed nature.

Open daily from 10:00 – 00:00

## UR SPA

Presiding over half of the 6th floor and connected to the hotel's pool and lounge area is the resplendent UR SPA, an exclusive space for relaxation and results-driven wellness. Five treatment rooms offer a minimalist, tropical reprieve.

Open daily from 10:00 – 21:00



## Barber at The RuMa by Truefitt & Hill

Originating from London, England and famed the world over, the Barber at The RuMa by Truefitt & Hill is the best in its class, offering grooming services to discerning gentlemen.

Open Tuesday to Sunday from 10:00 – 19:00

## Meetings and Events

More than a hotel, The RuMa Hotel and Residences is host to a charming local scene. The hotel offers a variety of spaces for both corporate meetings and social gatherings, from indoor board and meeting rooms equipped with state-of-the-art audio-visual technology to an outdoor terrace meeting space enveloped by the Kuala Lumpurian sun. All events are curated and executed entirely bespoke by a dedicated events manager to guarantee the success of your event at The RuMa Hotel and Residences.

### Function / Meeting Room Size Chart

FUNCTION ROOM	ROOM SIZE		CEILING		DIMENSIONS (m)	
	ft <sup>2</sup>	m <sup>2</sup>	ft	m	length	width
<b>MEZZANINE FLOOR</b>						
Bilik I & II	1885	175	9'8"	3	13.6	14.8
Bilik I	1077	100	9'8"	3	13.6	7.3
Bilik II	808	75	9'8"	3	10.2	7.5
Bilik III	463	43	9'5"	2.9	7.2	3.9
<b>LEVEL 6</b>						
SANTAI Pool Bar and Lounge	4091	380	13'1"	4	26	39.4
The Pavilion	1519	141	13'1"	4	19.3	7.4
Pavilion I	711	66	13'1"	4	9.1	7.4
Pavilion II	808	75	13'1"	4	10.2	7.4
<b>LEVEL 6M</b>						
Board Room	496	46	7'8"	2.4	9.5	4.5

### Function / Meeting Room Capacity Chart

FUNCTION ROOM	Banquet	Cocktail	Classroom	Theatre	Boardroom	U-Shape
<b>MEZZANINE FLOOR</b>						
Bilik I & II	140	180	-	-	-	-
Bilik I	80	100	63	100	36	36
Bilik II	60	80	45	78	24	24
Bilik III	-	-	-	-	14	-
<b>LEVEL 6</b>						
SANTAI Pool Bar and Lounge	-	150	-	-	-	-
The Pavilion	80	120	54	130	32	40
Pavilion I	40	50	24	60	16	20
Pavilion II	40	70	30	70	16	20
<b>LEVEL 6M</b>						
Board Room	-	-	-	-	14	-



THE RUMA HOTEL AND RESIDENCES

7 Jalan Kia Peng, 50450 Kuala Lumpur, Malaysia

T +60 3 2778 0888 F +60 3 2778 0999 [www.theruma.com](http://www.theruma.com)

A LUXURY HOTEL

*Managed by*

URBAN RESORT CONCEPTS



A MEMBER OF  
THE LEADING HOTELS  
OF THE WORLD



VIRTUOSO  
PREFERRED