

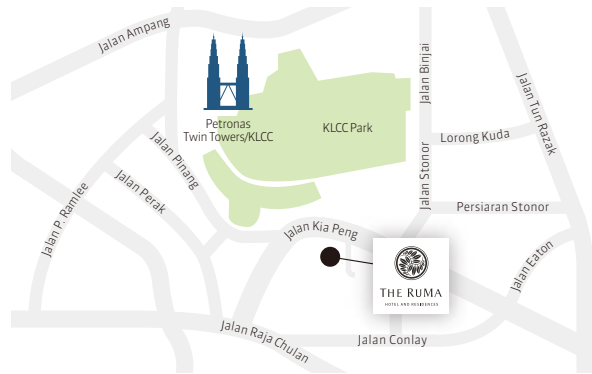


THE RUMA HOTEL AND RESIDENCES

7 Jalan Kia Peng, 50450 Kuala Lumpur, Malaysia
T +60 3 2778 0888
F +60 3 2778 0999
information@theruma.com
www.theruma.com
www.urbanresortconcepts.com

A LUXURY HOTEL
Managed by
URBAN RESORT CONCEPTS

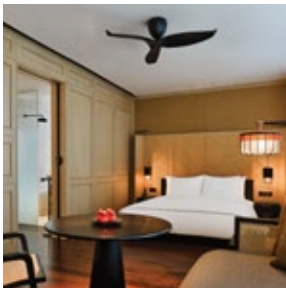
THE LEADING HOTELS
OF THE WORLD



Hostmanship by The RuMa

The RuMa means home in its most literal sense. It is a hotel that captures all the intimacy of a home, run by an accomplished host. A stay will inspire you to uncover the city's origins and colonial heritage in a contemporary and luxurious setting that exudes the soothing qualities of a true Urban Resort. You'll be charmed by a host and a guest experience unlike any in the region today. "Hostmanship", the mantra of the hotel, centres around its guests at its very core. Human, intuitive, generous and devoid of complicated processes. Once you arrive at The RuMa you enter a world that revolves around you.

- 253 luxuriously appointed guest rooms and suites
- "UR SPA" – Modern Science. Ancient Healing.
- "ATAS" – Modern Malaysian Eatery
- "SANTAI" – Pool Bar and Lounge
- "SEVEN" and "LIBRARI" – Lobby Bar and Lounge
- Meeting Space for up to 180 guests



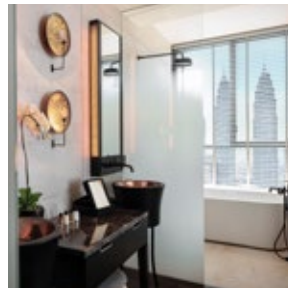
Location

Directions

- Located on Jalan Kia Peng in the "Golden Triangle", Kuala Lumpur's commercial, shopping and entertainment hub
- 60-minute car ride from Kuala Lumpur International Airport (KLIA) and KLIA2
- 20-minute car ride from Kuala Lumpur Sentral Station

Places of Interest

- Petronas Twin Towers (1 km)
- Dewan Filharmonik Petronas (1 km)
- Suria KLCC Shopping Mall (1 km)
- Kuala Lumpur Convention Centre (500 m)
- KLCC Park (500 m)
- Aquaria KLCC (500 m)
- Karyaneka Malaysian Craft (1 km)
- Pavilion Kuala Lumpur & Bukit Bintang Shopping District (1.2 km)
- Kuala Lumpur Tower (2.5 km)
- KL Forest Eco Park (2.7 km)
- Central Market & Chinatown (4 km)
- Royal Museum (5 km)
- Merdeka Square (5.5 km)
- National Mosque of Malaysia (6.7 km)
- Tunku Abdul Rahman Putra Memorial (6.7 km)
- Perdana Botanical Gardens (7 km)
- National Museum (7 km)
- KL Bird Park (8.4 km)
- Batu Caves (15 km)



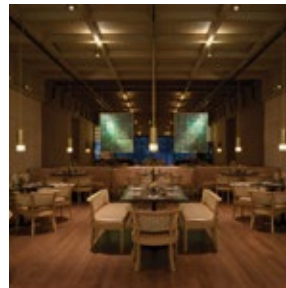
Accommodation

Room Category

- Deluxe Room (43 m²)
- Grand Room (45 m²)
- Corner Studio (45 m²)
- Grand Studio (48 m²)
- 2 Bedroom Family Studio (90 m²)
- Deluxe Suite (60 m²)
- Grand Suite (88 m²)
- 2 Bedroom Deluxe Suite (110 m²)
- RuMa Suite (111 m²)
- 2 Bedroom RuMa Suite (172 m²)

Room Amenities and Benefits

- Bedroom and bathroom separable by a floor-to-ceiling screen
- Designated lounge, work and dining area
- Complimentary stocked mini bar with daily replenishment
- High-definition television with screen mirroring capability
- Twin vanity basins
- Oval soaking bathtub with separate rainforest shower
- Automated blackout roller blind
- Nespresso coffee machine
- Traditional tea set
- Personal safe
- King and Twin bedding
- Sumptuous 330-thread count Egyptian cotton bed linen
- Complimentary best in class Wi-Fi
- Complimentary breakfast
- Complimentary local telephone calls
- Welcome drink of choice
- 24h Check-in and Check-out (subject to prior notice of arrival and departure time)



Dining

- SEVEN Lobby Bar and Lounge
- ATAS Modern Malaysian Eatery
- VERANDAH al fresco dining
- SANTAI Pool Bar and Lounge
- 24-hour in-room dining



Facilities

- LIBRARI
- Infinity pool
- Outdoor sun deck
- 24-hour state-of-the-art gym
- UR SPA
- Barber at The RuMa by Truefitt & Hill



LIBRARI



SEVEN Lobby Bar and Lounge



ATAS Modern Malaysian Eatery



LIBRARI

Tucked behind the Grand Salon on the lobby level, LIBRARI is a contemplative space that invokes the nostalgia of a grand home. Much more than your typical library lounge, it is a sensorial space where guests can voyage through time by discovering artefacts and flea market antiques from the Kuala Lumpur of yesteryear alongside vintage magazines and intriguing books on culture, design and architecture, while savouring a curated selection of refreshments, snacks, afternoon tea or classic cocktails.

SEVEN Lobby Bar and Lounge

Nestled discreetly into the daylight-filled conservatory that extends from the hotel's lobby, SEVEN Lobby Bar and Lounge offers an array of delectable drinks, refreshments, light meals, afternoon high tea or simply a beautifully human and domestic environment from which to indulge, converse or exchange.

Open daily from 10am – 1am.

ATAS – Modern Malaysian Eatery

Located on the mezzanine floor, ATAS – Modern Malaysian Eatery intertwines local produce, traditional tastes and unique ingredients with the contemporary touch of an alchemist. Embodying the soul of de-formalized dining, the open kitchen is surrounded by the common dining room, the VERANDAH al fresco dining area and one private dining room.

Open for breakfast, lunch and dinner.



SANTAI Pool Bar and Lounge

Opening up to the Kuala Lumpur skyline from the 6th floor, SANTAI Pool Bar and Lounge is a laid-back alcove where the black- and gold-graded infinity pool cantilevers over the building's edge to offer dreamscape views from above. Guests can take a leisurely dip before unwinding on the sun-soaked chaise lounges and sofa beds that dot the pool deck, while a terrace meeting room is available for discussions of a more relaxed nature.

Open daily from 11am – midnight.

UR SPA

Presiding over half of the 6th floor and connected to the hotel's pool and lounge area is the resplendent UR SPA, an exclusive space for relaxation and results-driven wellness. Five treatment rooms offer a minimalist, tropical reprieve.

Open daily from 10am – 10pm.



Barber at The RuMa by Truefitt & Hill

Originating from London, England and famed the world over, the Barber at The RuMa by Truefitt & Hill is the best in its class, offering grooming services to discerning gentlemen.

Open Tuesday to Sunday from 10am – 8pm.

Meetings and Events

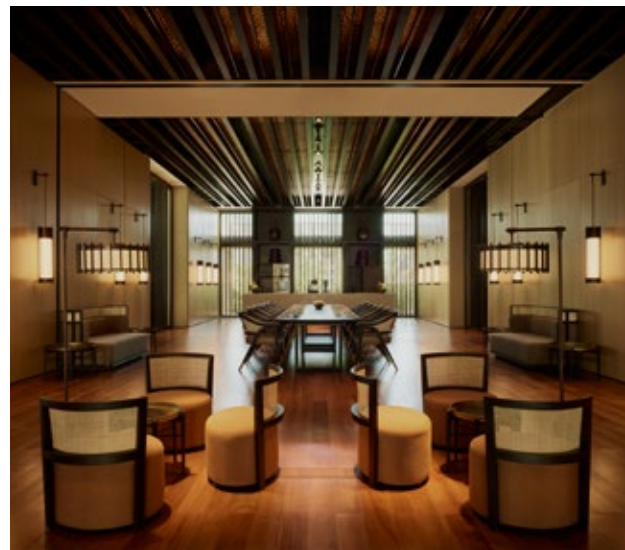
More than a hotel, The RuMa is host to a charming local scene. The hotel offers a variety of spaces for both corporate meetings and social gatherings, from indoor board and meeting rooms equipped with state-of-the-art audio-visual technology to an outdoor terrace meeting space enveloped by the Kuala Lumpurian sun. All events are curated and executed entirely bespoke by a dedicated events manager to guarantee the success of your event at The RuMa.

Function / Meeting Room Size Chart

FUNCTION ROOM	ROOM SIZE		CEILING		DIMENSIONS (m)	
	ft ²	m ²	ft	m	length	width
MEZZANINE FLOOR						
Bilik I & II	1885	175	9'8"	3	13.6	14.8
Bilik I	1077	100	9'8"	3	13.6	7.3
Bilik II	808	75	9'8"	3	10.2	7.5
Bilik III	463	43	9'5"	2.9	7.2	3.9
LEVEL 6						
SANTAI Pool Bar and Lounge	4091	380	13'1"	4	26	39.4
The Pavilion	1519	141	13'1"	4	19.3	14.8
Pavilion I	711	66	13'1"	4	9.1	7.4
Pavilion II	808	75	13'1"	4	10.2	7.4
LEVEL 6A						
Board Room	496	46	7'8"	2.4	9.5	4.5

Function / Meeting Room Capacity Chart

FUNCTION ROOM	Banquet	Cocktail	Classroom	Theatre	Boardroom	U-Shape
MEZZANINE FLOOR						
Bilik I & II	140	180	-	-	-	-
Bilik I	80	100	63	100	36	36
Bilik II	60	80	45	78	24	24
Bilik III	-	-	-	-	14	-
LEVEL 6						
SANTAI Pool Bar and Lounge	-	150	-	-	-	-
The Pavilion	90	120	54	130	32	40
Pavilion I	40	50	24	60	16	20
Pavilion II	50	70	30	70	16	20
LEVEL 6A						
Board Room	-	-	-	-	14	-



The RuMa Hotel and Residences

7 Jalan Kia Peng, 50450 Kuala Lumpur, Malaysia

T +60 3 2778 0888 F +60 3 2778 0999 information@theruma.com

www.theruma.com

A LUXURY HOTEL
Managed by
URBAN RESORT CONCEPTS



A MEMBER OF
THE LEADING HOTELS
OF THE WORLD